

Port Augusta Accommodation Guide

Current May 2025



<https://www.portaugusta.sa.gov.au/>

<http://www.wadlata.sa.gov.au/>

Table of Contents

Table of contents	Page 1
Motel / Hotels	Pages 2 – 9
Caravan and Cabin Accommodation	Pages 10 – 13

DISCLAIMER

All information contained in this publication has been provided by each of the accommodation providers. Whilst every effort is made to provide the correct pricing information, it may be subject to change at any time, without prior notice. Wadlata Outback Centre does not accept any liability to any person claiming they have been misled or deceived by any material herein.



**Find out more about our region
1800 633 060**



Address: 41 Flinders Terrace, Port Augusta, South Australia 5700

Phone: 08 8641 9193

Email: info@wadlata.sa.gov.au

Website: <http://www.wadlata.sa.gov.au/>

HOTELS AND MOTELS

ACACIA RIDGE MOTOR INN

MAP REFERENCE: E6

ADDRESS: 33 Stokes Terrace

PHONE: 08 8647 2700

EMAIL: portaugusta@discoveryarks.com.au

Star Rating 3 Star

47 rooms – 94 Guest Capacity

FACILITIES: Hotel Facilities include Free WIFI, Swimming Pool, Barbeque area. Guests also receive full access to Discovery Parks caravan park facilities including their Laundry Facilities. Room facilities include TV, air conditioning, microwave, kettle, toaster, bar fridge, complimentary tea/coffee, coffee cups, ensuite bathroom linen and hair dryer.

PARKING: Complimentary parking is located in front of guest rooms.

DISABLED FACILITIES: No disabled rooms –all rooms located on ground floor.

PETS: No pets allowed.



Rooms Starting **FROM** \$110 per night

Double/Queen	Queen 1 Single
Triple	Family (4)
Family (5)	Family (6)

AUGUSTA BUDGET MOTEL

MAP REFERENCE: N14

ADDRESS: National Highway One

PHONE: 08 8642 2555

EMAIL: info@augustabudgetmotel.com.au

RAA Rating 2 Star

15 Units – Full Guest Capacity: 35 Guests

FACILITIES: Motel facilities include Laundry Room. Room facilities include; free Wi-Fi, flat-screen digital TV, air-conditioning, ensuite, microwave, electric kettle, toaster, and bar fridge.

PARKING: Complimentary parking located in front of guest rooms.

DISABLED FACILITIES: Walk in showers in every room.

PETS: Pets allowed. Rooms available at additional cost.



Queen Room	\$120
Queen + 1 Single	\$140
Queen + Bunk Bed	\$140
Extra Person/Cot	\$10
Pet friendly rooms	\$20 surcharge per day

AUGUSTA COURTYARD MOTEL

MAP REFERENCE: F7

ADDRESS: 10 Eyre Highway

PHONE: 08 8642 3622

EMAIL: motel@augustacourtyard.com.au

Star Rated 3.5 Star

25 Units – Full Guest Capacity: 59 Guests

Golden Chain Members will receive a 10 % Discount .

FACILITIES: Motel facilities include complimentary Continental Breakfast, non-smoking rooms, barbeque area and laundry room. Room facilities include Wi-Fi, kettle, toaster, microwave, air-conditioning, T.V and fridge.

PARKING: Complimentary parking located at the front of most rooms.

DISABLED FACILITIES: Disabled room available on request.

PETS: No pets allowed.



Standard Twin	\$130
Deluxe Queen	\$140
Deluxe Twin	\$160
Executive King	\$160
Studio Apartment (1-2 Adult)	\$190
Studio Apartment (3 Adults)	\$210

COMFORT INN & SUITES – AUGUSTA WESTSIDE

MAP REFERENCE: F6

ADDRESS: 3 Loudon Road

PHONE: 08 8642 2488

EMAIL: reservations@augustawestside.com.au

RAA Rating 3.5 Star

27 Units – Full Guest Capacity: 87 Guests

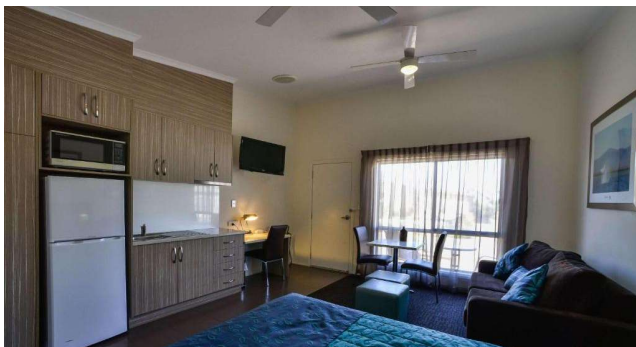


FACILITIES: Hotel facilities include Laundry facilities, a barbeque area, gym and seasonal pool. Room facilities include Wi-Fi, kettle, toaster, microwave, air-conditioning, TV, ensuite, fridge, hairdryer, iron, and complimentary toiletries.

PARKING: Complimentary parking located outside guest rooms.

DISABLED FACILITIES: No disability access rooms/ facilities.

PETS: No pets allowed.



Spa Room with King Bed	\$165	Executive Queen + Single Bed	\$149
Queen Room	\$139	Queen Bed + 2 Single Beds	\$149
Queen Room + Sofa Bed	\$139	2 Queen Beds	\$149
Queen Bed + 1 Single	\$139	Queen + 3 Single Beds + Sofa Bed	\$159
Studio Queen Bed + Sofa Bed	\$170	Spa Apartment Queen+ Sofa Bed	\$220
3 Bedroom Unit	\$260		

COSTELLO HOTELS

MAP REFERENCE: H7

ADDRESS: 54 Commercial Road, Port Augusta

PHONE: 08 8823 4068

EMAIL: reservations@costellohotels.com.au

7 Apartments – Full Guest Capacity – 18 Guests

FACILITIES: Apartment facilities include Wi-Fi, air conditioning, kitchen (includes coffee maker, toaster, hotplate, kitchen equipment, kitchen, microwave, refrigerator), bathroom amenities, ironing facility, flat screen TV and sofa bed on request for extra guests.

PARKING: Complimentary secured car parking available on the back side of the Town Hall. Access via Beauchamp Lane.

DISABLED FACILITIES: No disabled rooms available .



One Bedroom Suite	From \$195 per night
Two Bedroom Suite	From \$255 per night
One Bedroom Superior Apartment	From \$275 per night
Two Bedroom Deluxe Apartment	From \$305 per night
Loft	From \$375 per night



PHOTO: Port Augusta by Beardy Photography

CROSSROADS ECO MOTEL

MAP REFERENCE: E6

ADDRESS: 45 Eyre Highway

PHONE: 08 8642 2540

EMAIL: booking@ecomotel.com.au



22 Rooms – Full Guest Capacity: 51 Guests

FACILITIES: . Motel facilities include free Wi-Fi, guest lounge and barbeque area available for all guests. Room facilities include King Beds, ensuite, kitchenette, fridge, microwave leather sofa, outdoor deck area and 40 inch TV and desk.

PARKING: Complimentary Parking located outside guest rooms.

DISABLED FACILITIES: Two disabled rooms available .

PETS: Two pet friendly rooms available.



Standard Room (King bed)	\$ 142
King Deluxe Room (King Beds)	\$146
Twin Room (King Bed + Single Bed)	\$ 159
Disability Access/Pet Friendly (KB + S)	\$ 170 with pet \$146 without pet
Disability Access Room/Pet Friendly (King Bed)	\$ 170 with pet \$146 without pet
Family Room (Queen Bed + 2x Single Beds)	\$ 179
Extra bed/guest	\$ 20



PHOTO: Red Banks

By Beardy Photography

THE ECONO LODGE PORT AUGUSTA

MAP REFERENCE: N14

ADDRESS: National Highway One

PHONE: 08 8151 3011

EMAIL: eboniew@mghotelgroup.com.au

RAA Rating 3.5/4 Stars

45 Units – Full Guest Capacity: 121 Guests

FACILITIES: Motel facilities includes Laundry and Barbeque area are available to utilise. Room Service and complimentary Wi-Fi accessible to all guests. Guests can enjoy a grab and go breakfast. Late Checkout available. Choice Privileges Rewards.

Room facilities includes an ensuite with air-conditioning, daily housekeeping, complimentary toiletries, hairdryer, flat-screen TV, kettle, toaster and bar fridge. Deluxe Queen rooms have full kitchenette. Rooms (excluding budget rooms) have microwaves. Certain rooms feature a seating area for your convenience.

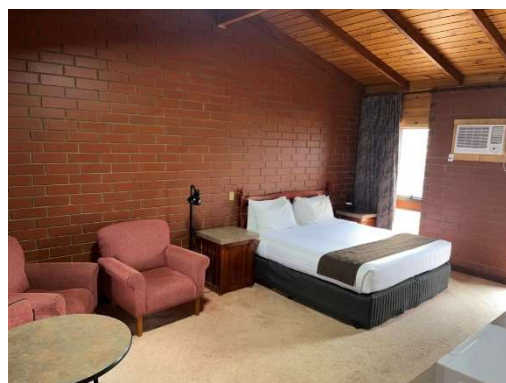
PARKING: Complimentary parking located outside guest rooms.

DISABLED FACILITIES: 1 Wheelchair access room with shower chair on request.

PETS: No pets allowed.

Quoted Rates are subject to change and availability at any time – Accommodation under new management – previously Highway One Motel

Rooms	1- 2 guests FROM	3 guests FROM	4 guests FROM
Standard Single	\$90	-	-
Standard Queen 1 Single	\$110	\$130	-
Standard Queen 2 Singles	\$105	\$125	\$145
Economy King	\$110	-	-
Economy Queen + 2 Singles	\$100	\$120	-
Deluxe King	\$130	-	-
Deluxe Queen 1 Single	\$135	\$155	-
Deluxe Queen with Kitchenette	\$140	-	-
Deluxe 2 Bedroom Q + 2 Singles	\$120	\$140	\$160



FLINDERS HOTEL MOTEL

MAP REFERENCE: H7

ADDRESS: 39 Commercial Road

PHONE: 08 8642 2544

EMAIL: info@thehotelflinders.com

27 - Rooms (some upstairs) Full Guest Capacity: 45 Guests

FACILITIES Hotel facilities include Free Wi-Fi, Restaurant, gaming room and Bar available on site for guests. Room Facilities include private amenities, air-conditioning/heating, coffee making facilities, daily housekeeping and laundry facilities available by request at additional cost.

PARKING: Complimentary secure parking located behind hotel.

DISABLED FACILITIES: No wheelchair access rooms.

PETS: No pets allowed.



Queen Room	\$130
Queen+ 1 Single Bed	\$160
Queen+ 2 Single Beds	\$200
Queen + 3 Single Beds	\$240
3 Single Beds	\$160



PHOTO: Port Augusta by Beardy Photography

MAJESTIC OASIS APARTMENTS

MAP REFERENCE: G7

ADDRESS: Marryatt Street

PHONE: 08 8648 9000 **FAX:** 08 8648 9088

EMAIL: oasis@majestichotels.com.au

Star Rating 4

75 Units – Full Guest Capacity: 206 Guests

FACILITIES: Facilities include barbeque area, room service, swimming pool and laundry facilities available. EV Charging Station. Wi-Fi and breakfast available.

Room facilities include self-contained apartments equipped with large screen TVs, Foxtel, DVD player, kitchenette, microwave, tea and coffee facilities, phone, iron/ironing board, hairdryer, bathroom, laundry facilities, electric blankets and in room safe. Some apartments feature a private courtyard or outdoor deck.

PARKING: Complimentary secure parking located outside rooms.

DISABLED FACILITIES: Accessible rooms available on request .

PETS: 3 Pet friendly rooms available. Pet friendly room rates **include** \$50 cleaning fee.



Rooms	Fri- Sun	Mon- Thu
Studio Apartment (1-2people)	\$140	\$215
Deluxe 1 Bedroom (1-2people)	\$170	\$230
Waterfront 1 bedroom (Downstairs)	\$205	\$275
Water view 1 Bedroom (Upstairs 1-3 people)	\$220	\$290
Waterfront 2 Bedroom (1-5 people)	\$255	\$325
Waterfront Spa (1-2people)	\$220	\$290
Pet Friendly - Deluxe 1 Bedroom (1-2people)	\$230	\$290
Pet Friendly – Waterfront Spa (1-2 People)	\$280	\$350
Pet Friendly - Waterfront 1 bedroom (Downstairs)	\$255	\$310
Pet Friendly - Waterfront 2 Bedroom Apartment (1-5 ppl)	\$295	\$350

MOTEL POINSETTIA

MAP REFERENCE: F7

ADDRESS: 24 Burgoyne Street

PHONE: 08 8642 2411

EMAIL: motelpoinsettia@bigpond.com

RAA Rating 3 Star

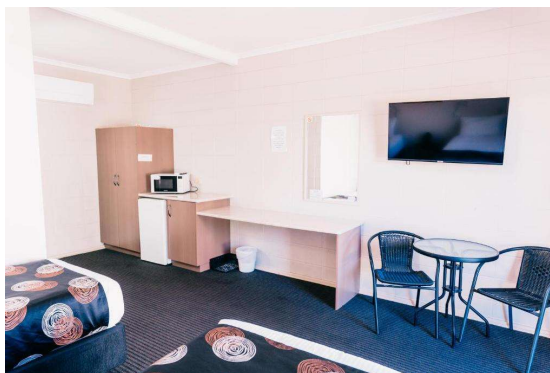
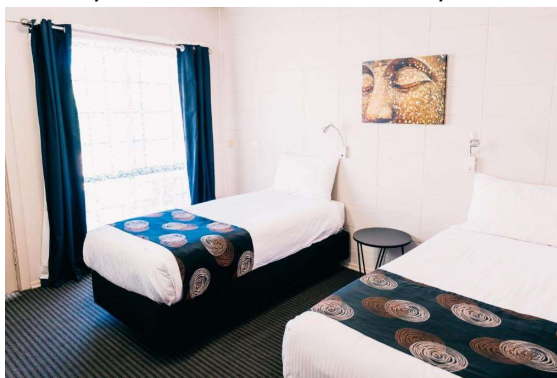
23 Rooms - All ground floor + Full Guest Capacity: 65 Guests

FACILITIES: Motel facilities include barbecue area, laundry facilities and guest kitchen. Room facilities include air-conditioning, free Wi-Fi, a microwave, toaster, a kettle and an iron.

PARKING: Complimentary parking located in front of guest rooms.

DISABLED FACILITIES: NO accessible rooms - all showers walk in.

PETS: Pet friendly rooms available. Pet friendly rooms will incur an additional \$20 per night fee.



Twin Room	\$125
Queen	\$125
Deluxe Twin (Sleeps 3)	\$140
Quadruple (Sleeps 4)	\$155
Two Bedroom Apartment (Sleeps 5)	\$165
Standard Family (Sleeps 5)	\$165
Family Suite (Sleeps 6)	\$180
Cots	\$10

PAMPAS MOTEL

MAP REFERENCE: K10

ADDRESS: 76 Stirling Road

PHONE: 08 8642 3795

TiCSA Rating 4 Star

10 Rooms – Full Guest Capacity: 27 Guests

FACILITIES: Motel facilities include laundry services, shared main house, shared pergolas, shared barbeque area. Room facilities include Wi-fi, air conditioning/heating. All rooms have a TV and fridge, suite rooms also have a kitchenette with microwave, iron/ironing board and extra blankets.

PARKING: Complimentary on-site, secure gated parking.

DISABLED FACILITIES: No disability access rooms.

PETS: No pets allowed.



Queen + 1 Single	-
Double + 1 Single With Shared Bathroom Facilities	-
Double Bed With shared Bathroom facilities	-

PASTORAL MOTEL

MAP REFERENCE: J9

ADDRESS: Stirling Road

PHONE: 08 8642 2818

EMAIL: gaming@pastoralhotelmotel.com.au

RAA Rating 3.5 Star

13 Units – Full Guest Capacity: 35 Guests



FACILITIES: Motel facilities include bistro, bar, bottle shop and gaming room located across the car park open 7 days a week. NEW! EV charging station (slow charging). Room facilities include self-contained rooms feature en-suite bathrooms, kitchenette, iron/ironing board, hair dryer, cots (on request), roller beds (on request at additional cost) laundry facilities, air conditioning, flat-screen televisions, Foxtel and free Wi-Fi.

PARKING: Complimentary parking located outside guest rooms.

Large vehicle parking available in carpark. Lockable facilities for your trailer, boat or motorbike on request.

DISABLED: Disabled access room available.

PETS: No pets allowed.



Rooms	1 Guest	2 Guests	EXTRA
Superior Queen	\$120	\$130	\$25
Superior King	\$120	\$130	\$25
Sup King Twin	-	\$130	-
Interconnecting Family	-	\$185	-

STANDPIPE GOLF MOTOR INN

MAP REFERENCE: E5

ADDRESS: Stuart Highway and Highway One

PHONE: 08 8642 4033

EMAIL: info@standpipe.com.au

RAA Rating 3.5 star

86 Units – Full guest capacity: 130 Guests

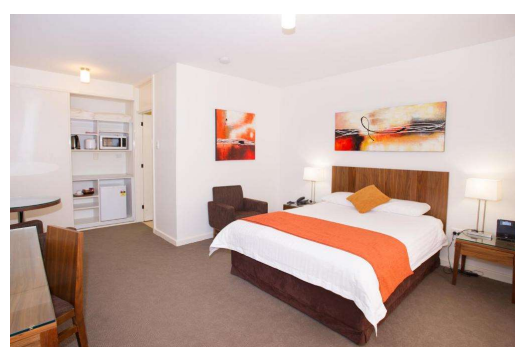
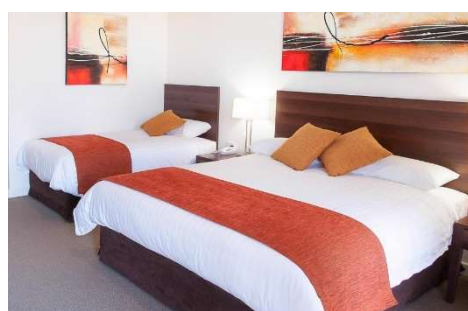


FACILITIES: Motel facilities include 24/hour reception, 18 – hole golf course, barbeque area, gazebo, swimming pool, conference/meeting rooms, laundry services, Tesla charging stations, breakfast service and restaurant is open 7 days a week with both Indian and Western menu. Room facilities include daily housekeeping, air-conditioning, digital flat-screen TV, free high-speed Wi-Fi, microwave, toaster, fridge tea /coffee making facilities and room service.

PARKING: Complimentary parking available located outside guest rooms.

DISABLED: Disabled access room available.

PETS: Pet friendly rooms available.



Standard Queen /Twin	\$165
Deluxe Queen/Twin	\$175
Disabled Queen/Twin	\$175
Executive King	\$185
Pet Friendly Rooms	\$175
Family Q+2S (4ppl)	\$185
Apartment King & Queen Divan	\$205
Cots & fold out beds	\$ 20

CARAVAN & CABIN PARKS

SHORELINE CARAVAN PARK

MAP REFERENCE: D7

ADDRESS: Gardiner Avenue PO Box 519

PHONE: 08 8642 2965

EMAIL: info@shorelinecaravanpark.com.au



29 Units & 4 Bunkhouse – Full guest capacity – 139 Guests

FACILITIES: Park facilities include Laundry facilities, camp kitchen (including gas stoves, microwaves, toasters, kettles, utensils) barbeque area, games room and swimming pool available to all guests. G'Day Rewards and Top Park Members receive a 10% discount. Cabin facilities include air conditioning, TVs, ensuite bathrooms and Wi- Fi (200 GB free). Most cabins also include cooking facilities (excludes budget and single cabins).

PARKING: Complimentary parking located in front of cabins.

DISABLED: Disabled cubicle in bathroom facilities, Disabled cabin on request.

PETS: No pet's allowed in cabins, allowed on all sites.



	1-2 Guests	Extra Adult	Extra Child
Waterfront Cabin	\$150.00	\$20.00	\$15.00
Flinders Cabin	\$110.00	\$15.00	\$10.00
Standard 2 Bedroom	\$105.00	\$10.00	\$ 7.00
Standard 1 Bedroom	\$ 95.00	\$10.00	\$ 7.00
Budget Cabin	\$ 79.00	-	-
Single Budget Cabin	\$ 75.00	-	-
Powered Ensuite Site	\$ 56.00	\$10.00	\$ 7.00
Powered Site	\$ 45.00	\$10.00	\$ 7.00
Un-powered Site	\$ 37.00	\$10.00	\$ 7.00
Backpacker Bunkhouse	\$ 55.00	\$10.00	-
Coach Site (Min 10 pax)	\$ 9.90 per person (min of 10pax)	-	-
Van Storage (proof of insurance required)	\$ 4.40 per night	-	-

PORT AUGUSTA MOTOR HOME PARK

MAP REFERENCE: N11

ADDRESS: Old Power Station Road

PHONE: 08 8642 4122

EMAIL: centfc@bigpond.net.au

20 sites available

This campground is for **FULLY SELF-CONTAINED campers ONLY – NO Tents, Rooftop Tents or Swags**. No bookings required. No electricity connection/ no amenities for guests.

FACILITIES: Dump point and water facilities are available. Payment can be made through the honesty box or at the Football club. Open 24/7. Football Club open Monday – Friday for Bar and Meals, Saturdays – Bar.

PARKING: All sites outlined with white posts.

DISABLED: no facilities.

PETS: Pets allowed; must be restrained at all times.



Self Contained Motorhomes / Caravans	\$10.00 per night \$60 for 7 consecutive nights – MUST BE organized with manager
--------------------------------------	--

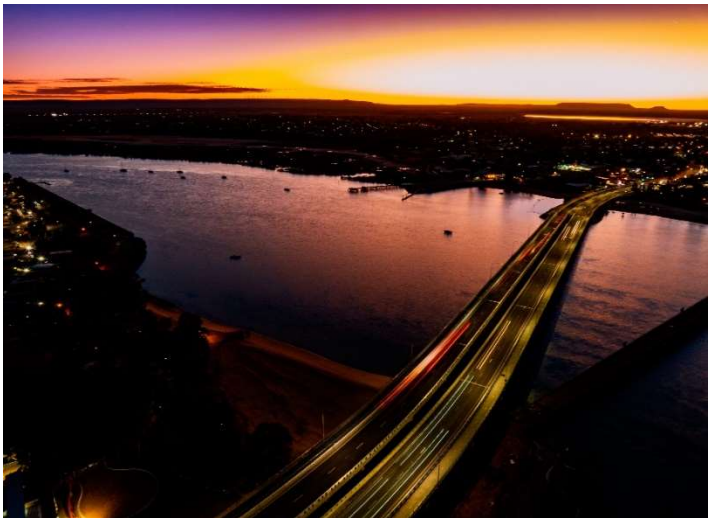


PHOTO: Port Augusta by Beardy Photography

PORT AUGUSTA DISCOVERY PARKS

MAP REFERENCE: E6

ADDRESS: Corner Highway 1 & Stokes Terrace Port Augusta

PHONE: 08 8647 2700

EMAIL: portaugusta@discoveryparks.com.au

135 Cabins + 90 Sites



FACILITIES: Park facilities include a Barbecue Area, table tennis, swimming pool, toddler's pool, camp kitchen, shop offering ice, laundry facilities (card and coin accepted), recreation room with TV, Gym and Playground.

All G'Day Rewards members will receive 10% discount.

Furnished, self-contained cabins and Standard cabins provide linen, air conditioning, TV, microwave, kettle.

Some but not all cabins also have stove top or full cooking facilities.

PARKING: Parking located alongside cabins or sites. Standard rooms must use the communal carpark for guests .

DISABLED: Access cabins available. NO shared disabled facilities.

PETS: Pets allowed on all sites. Pet friendly cabins available.



	2 Persons
Unpowered site	From \$35.00
Powered (Standard, Drive Thru, Ensuite)	From \$35.00 - \$50

All Cabin accommodation **from** \$110 - 250.00 per night
(Daily specials available please call park for more information)

Standard Cabin

Superior Cabin

Deluxe Cabin

Pet Friendly Economy Cabin

****Prices for additional guests and Solo Travellers available for enquiry at park****

FULLER VIEWS CABIN PARK

MAP REFERENCE: D16

ADDRESS: 50 Quorn Road, Stirling North

PHONE: 08 8643 6689

EMAIL: info@fullerviews.com.au

14 Cabins - Full Cabins Capacity: 46 Guests

FACILITIES: Park facilities include Free Wi-Fi, Guest laundry and barbeque area. Cabins facilities include fully self contained with kitchen (fridge/freezer, microwave oven, gas stove, air conditioning, sink, cutlery, crockery, toaster, kettle) and linen provided.

PARKING: Complimentary parking spaces located outside cabins.

DISABLED: Disabled access cabins available.

PETS: No pets allowed.



1 Bedroom Cabin – Queen Bed (sleeps 2)	\$140.00
2 Bedroom Cabin - 1 Queen/3 single (Sleeps 2,3,4 or 5)	\$185.00
2 Bedroom Cabin - 2 Queen Beds and 1 Single Bed (Sleeps 2,3,4 or 5)	\$185.00
SPA 1 Bedroom Cabin 1 Queen Bed (Sleeps 2)	\$165.00

AUGUSTA CARAVAN PARK – STIRLING NORTH

MAP REFERENCE: C15

ADDRESS: Brook Street Stirling North

PHONE: 08 8643 6357

EMAIL: info@augustacp.com.au



50 caravan sites, 7 self contained units. Full Unit Capacity: 21 Guests.

FACILITIES: Park facilities include Big Rig Friendly, drive through sites, laundry facilities, Wi-Fi. Barbeque area, camp kitchen, communal fire pit (seasonal), weekly rates for workers and picnic area for all guests.

Caravan storage (\$4 per day) – caravans stored inside park (no shelter not behind fencing)

Cabin facilities include linen, TV, air conditioning, fully self-contained kitchenette with microwave, toaster, fridge, and kettle.

PARKING: Complimentary parking located alongside units (verandah parking for front units only)

DISABLED: Disabled showers and toilets facilities available for all guests – no disabled cabins.

PETS: Pets allowed on all sites and pet friendly units available.



	1-2 Guests	Extra Adult over 12 yrs	Extra Child 5-12 yrs
Powered Site	\$35.00	\$10	\$5
Unpowered site	\$29.00	\$10	\$5

	1 person	2 people	Additional Guests
Budget Room	\$85	\$100	-
Pet Friendly Unit	\$95	\$125	-
Fully Self Contained 1 Bedroom Cabin	\$95	\$125	
Fully Self Contained 2 Bedroom Cabin (2 Queen Beds)		\$150	
3 B House (1 queen/2 singles)	\$95		Costs apply depending on how many additional guests

BENTLEY'S CABIN PARK

MAP REFERENCE: D4

ADDRESS: Lot 2 Stuart Hwy, Port Augusta

PHONE: 08 8641 1620

EMAIL: reservations@cabinpark.com.au

115 Cabins – Full Guest capacity: 342 Guests

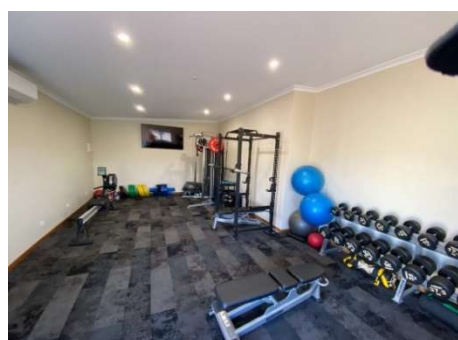
FACILITIES: Park facilities include Gated Cabin Park, guest laundry, complimentary Wi-Fi, Gym, Barbeque area, conference room, Bar (Open until 8:30pm).

Cabin facilities include, ensuites, fully self-contained kitchen with microwave, stovetop, kettle, toaster, fridge, glassware, plates, utensils and crockery. Complimentary tea and coffee. Towels and Linen provided. TV, Electric Blankets, air conditioning, dining suite and lounge. 3 bedroom cabins also have spa bath, dishwasher and full oven facilities.

PARKING: Complimentary parking located alongside cabin.

DISABLED: 5 disabled/ wheelchair access rooms available.

PETS: No pets allowed.



Rooms	1-2 Guests	Extra person
1 Bedroom Ensuite Cabin (1 queen)	\$170	-
2 Bedroom Ensuite Cabin (1 x queen & 2 king singles)	\$195 (Queen Bed Only)	\$25
3 Bedroom Ensuite Cabin with spa/dishwasher (sleeps 6) (2 x queen & 2 king singles)	\$260	\$25